

Configuring and Using Acrobat Distiller 5.0

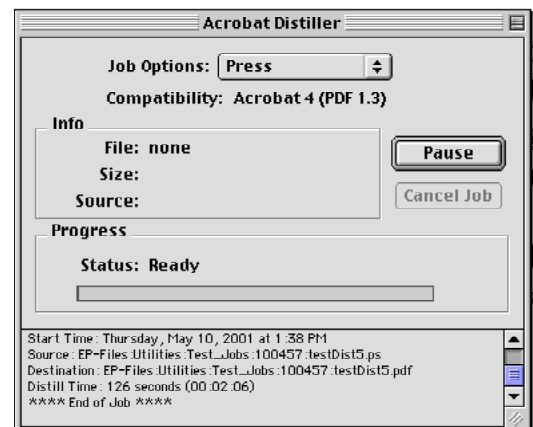
7300 W. Joy Road • Dexter, Michigan 48130-9701
734.426.3939 • Fax 800.706.4545

We strongly recommend that you read the online guide for Acrobat Distiller before proceeding. There is information in those guides that has not been duplicated in this document. There are also “readme” files in the Acrobat folder that are application-specific. It is recommended that you take a look at those as well.

This guideline assumes that you have created a good PostScript file from the source application that created the files. We can provide guidelines for PostScript conversion for the most common applications.

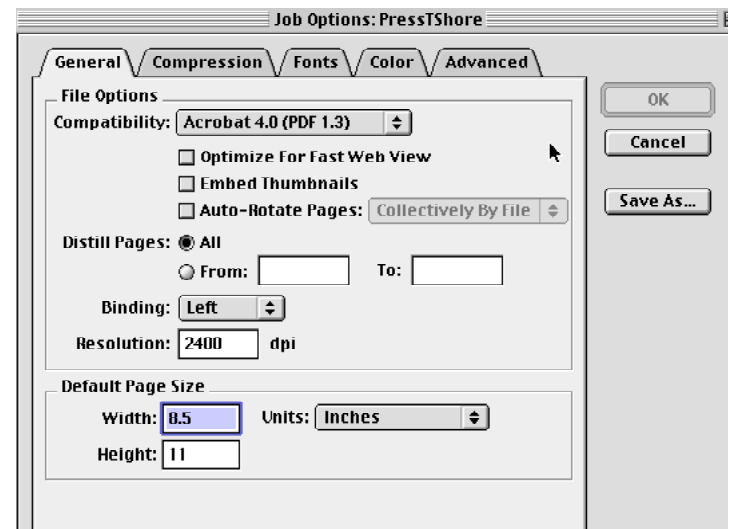
This guideline was prepared based on jobs that are printing in 1 color (Black), using a composite workflow. Using this guideline correctly will allow us to electronically impose and output your PDF files. If your project requires more color than black, consult your customer care team on how to proceed. When creating files for web publishing, search out guidelines for that medium.

1) Launch Acrobat Distiller 5. In the dialog box that comes up, choose Press from the Job Options pop-up window. You’ll start with these settings, and configure a new set for Thomson-Shore’s requirements.



While this Distiller dialog box is showing, select the Settings menu, and then Job Options . . . This will bring up the dialog box below.

2) If it is not already showing, click on the General tab. Under the General tab, select **Acrobat 4.0 (PDF 1.3)** in the File Options Compatibility area. Leave Optimize For Fast Web View, Embed Thumbnails and Auto-Rotate Pages unchecked; set the Binding to Left and the resolution to 2400 dpi.



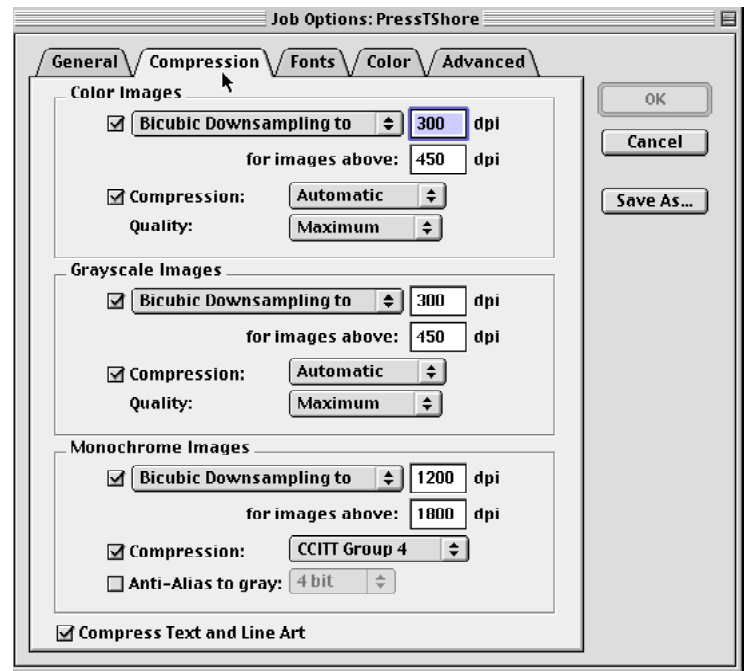
Note: Optimize PDF is targeted for on-line documents. If you typically make your PDF files to the exact trim size and the job contains bleeds, optimizing the PDF will clip this bleed information.

Click on the Compression tab.

3) Select all the options shown at right.

If you have scanned line art at a resolution higher than 1200 dpi and do not want it downsampled, deselect the downsampling option for “Monochrome Images.”

If you are uneasy with any of these options then disable them. This will result in bigger file sizes but should not cause output problems



Click on the Fonts tab.

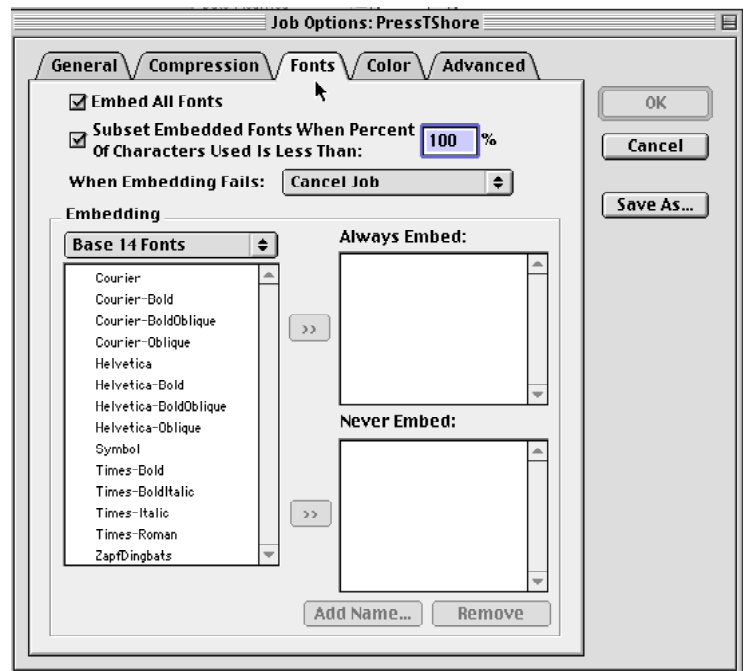
4) In this dialog box select “Embed All Fonts” and set the “Subset Embedded Fonts When...:” to 100%. Subsetting fonts interferes with the ability to make minor edits to the file, however it will ensure that the proper fonts are imaged when your pages are output. We will need a new file supplied for any corrections.

*The most reliable way to include fonts is to embed them in the PostScript file before distilling. **This is the only way to include TrueType fonts.** If Distiller cannot locate the fonts you may have to use the Font Locations menu option to tell Distiller where the fonts are located. This is under the Settings menu, choose Font Locations.*

Acrobat 3 ignored font licensing when embedding fonts. Adobe changed this in Acrobat 4 and 5 . If the fonts are failing to embed due to licensing restrictions this will show up in the Distiller dialog box and will be recorded in the log file. Primarily this will happen with TrueType fonts and some fonts created with Fontographer.

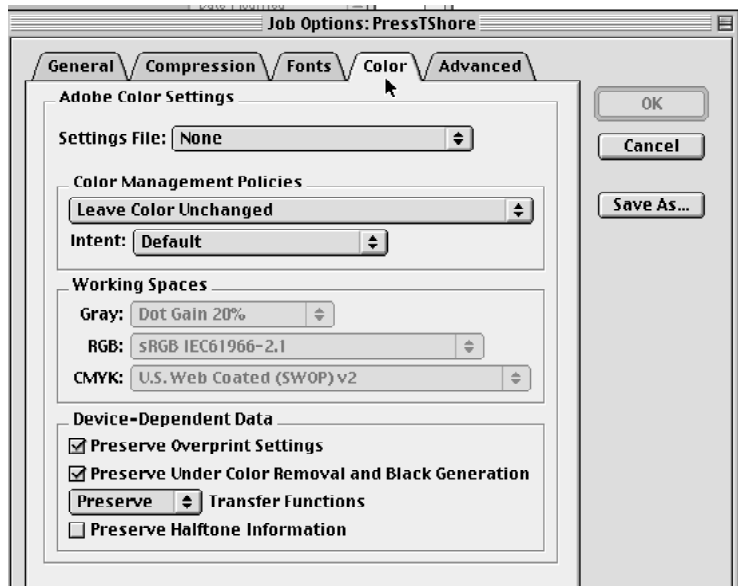
To proceed you may go back to Acrobat 3.0 if it is available, change the offending font, or provide another file format for output. You should also contact the font manufacturer to see if they can supply you with fonts without licensing restrictions.

When checking your files in Acrobat 5 you may notice that some fonts are not using the proper font for display, (i.e., Times-Roman may be displaying with Times New Roman MT). If this is happening, go into the Acrobat 5 folder and locate the Resource folder / fonts. When Acrobat installs it loads these fonts, remove all items from this folder except Adobe Sans MM, Adobe Serif MM and the AdobeFnt.lst. (The location of these fonts on Windows may be different).



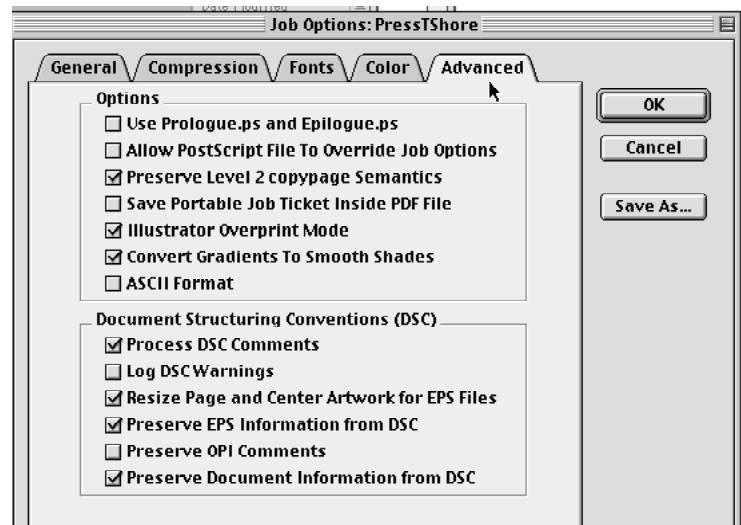
Now click on the Color tab.

- 5) “Settings File:” should be set to **None**. Under the “Color Management Policies”, select **Leave Color Unchanged**. “Intent” should be set to **Default**. Under “Device-Dependent Data”, Preserve Overprint Settings and Preserve Under Color Removal... should be **checked**. **Preserve** should be selected for Transfer Functions.



Now click on the Advanced tab.

- 6) Make the selections as shown in the figure at right.



- 7) Click “Save As” on the right side of the dialog box. In the parenthesis type a name that will help you recognize who the configuration belongs to. For our example we are using **PressOptimized(TShore)**. Now click on Save. The configuration is done and you can now distill your PostScript files. For automated batch processing you can set up a “Watched” folder on your desktop. Refer to the Distiller manual for setting up Watched folders.

- 8) Once your files are in PDF format, you can view and print them. After you have looked over your PDF document you can easily verify if fonts are embedded subsets by going to the File menu/Document Info/Fonts. This dialog box provides information about the fonts. What you do not want to see here is Adobe Serif MM or Adobe Sans MM. If you do see these then your fonts were not available to distiller, it is using these Multiple Masters to simulate the missing font.

