

Configuring and Using Acrobat Distiller 6.x for Mac/Windows

7300 W. Joy Road • Dexter, Michigan 48130
734.426.3939 • Fax 800.706.4545

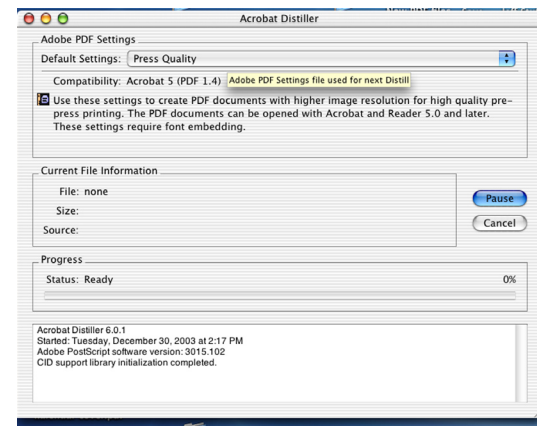
This guideline assumes that you have created a good PostScript file from the source application that created the files. PostScript conversion guidelines are available for the most common desktop publishing applications. They can be downloaded from our website.

This guideline was prepared based on jobs that are printing in 1 color (Black), using a composite workflow. Using this guideline correctly will allow us to electronically impose and output your PDF files.

If your files are in printing colors other than black, we would prefer that you supply them as native application files. Please include any fonts and graphics that were used or placed if you are supplying application files. Color files are more complicated and we have more control with the application files than with a PDF.

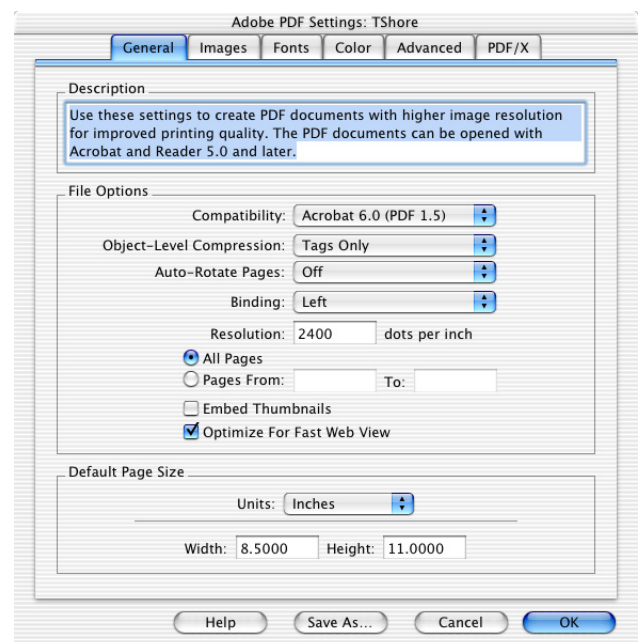
1) Launch Acrobat Distiller 6. In the dialog box that comes up, choose Press Quality from the Job Options pop-up window. You'll start with these settings, and configure a new set for Thomson-Shore's requirements.

While this Distiller dialog box is showing, select the Settings menu, and then Job Options . . . This will bring up the dialog box below.



2) If it is not already showing, click on the General tab. Under the General tab, select **Acrobat 6.0 (PDF 1.5)** in the File Options Compatibility area. Follow the screen capture to the right for the remaining settings.

Note: Optimize PDF is targeted for on-line documents. If you typically make your PDF files to the exact trim size and the job contains bleeds, optimizing the PDF will clip this bleed information.

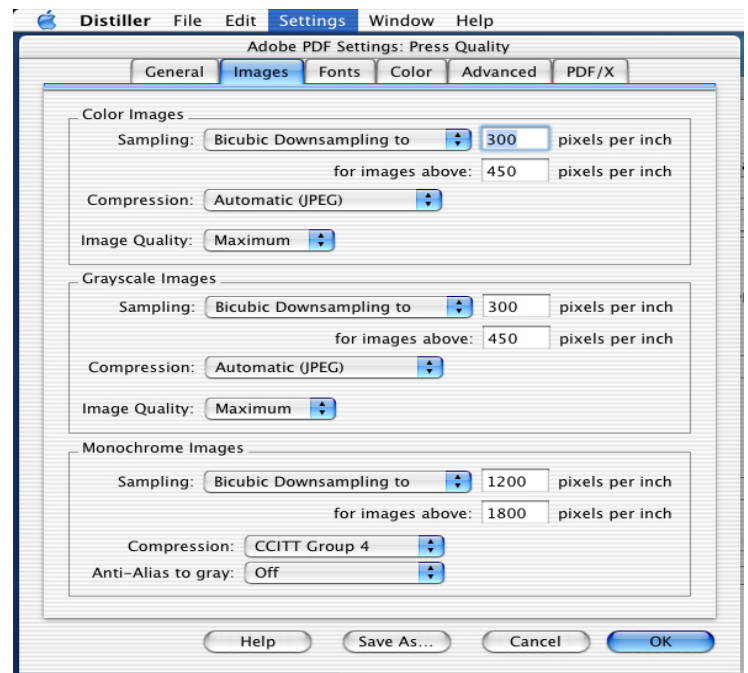


Click on the Images tab.

3) Check all the options shown at right. These options should already be set.

If you have scanned line art at a resolution higher than 1200 dpi and do not want it downsampled, deselect the downsampling option for “Monochrome Images.”

If you are uneasy with any of these options then disable them. This will result in bigger file sizes but should not cause output problems.

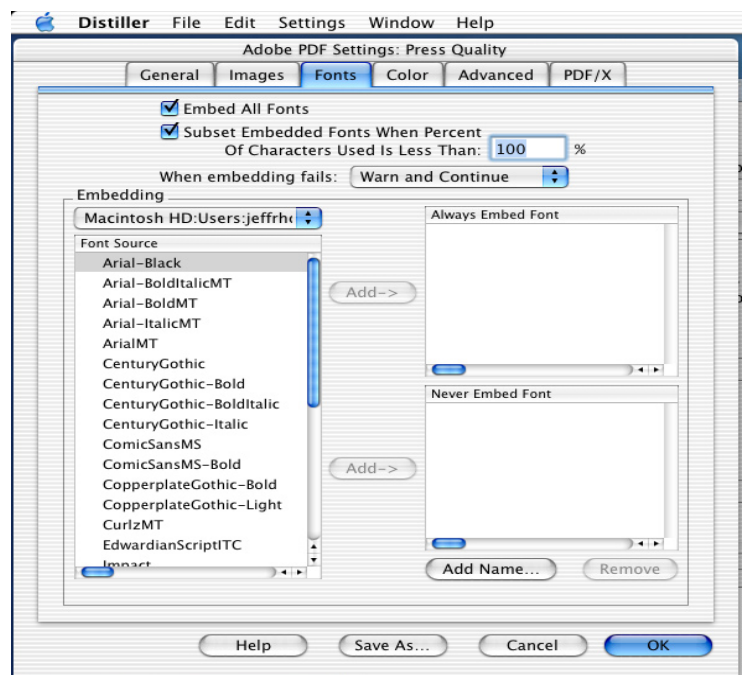


Click on the Fonts tab.

4) In this dialog box select “Embed All Fonts” and set the “Subset Embedded Fonts When...:” to 100%. Subsetting fonts interferes with the ability to make minor edits to the file, however it will ensure that the proper fonts are imaged when your pages are output. We will need a new PDF file supplied for any pages you make corrections to.

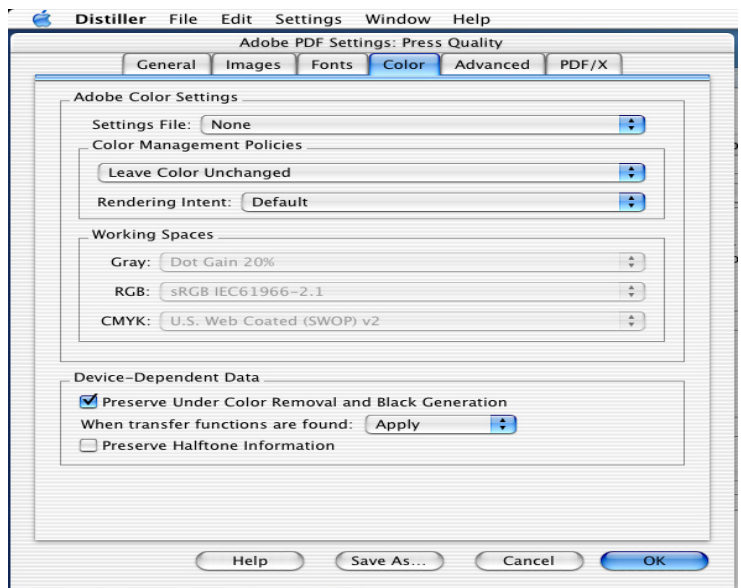
*The most reliable way to include fonts is to embed them in the PostScript file before distilling. **This is the only way to include TrueType fonts.** If Distiller cannot locate PostScript fonts you may have to use the Font Locations menu option to tell Distiller where the fonts are located. This is under the Settings menu to Font Locations.*

Acrobat 4 and above honors licensing agreements for TrueType fonts and may not let you embed copyprotected fonts. If the fonts are failing to embed due to licensing restrictions this will show up in the Distiller dialog box and will be recorded in the log file. This can happen with some TrueType fonts, foreign language fonts and fonts created with Fontographer.



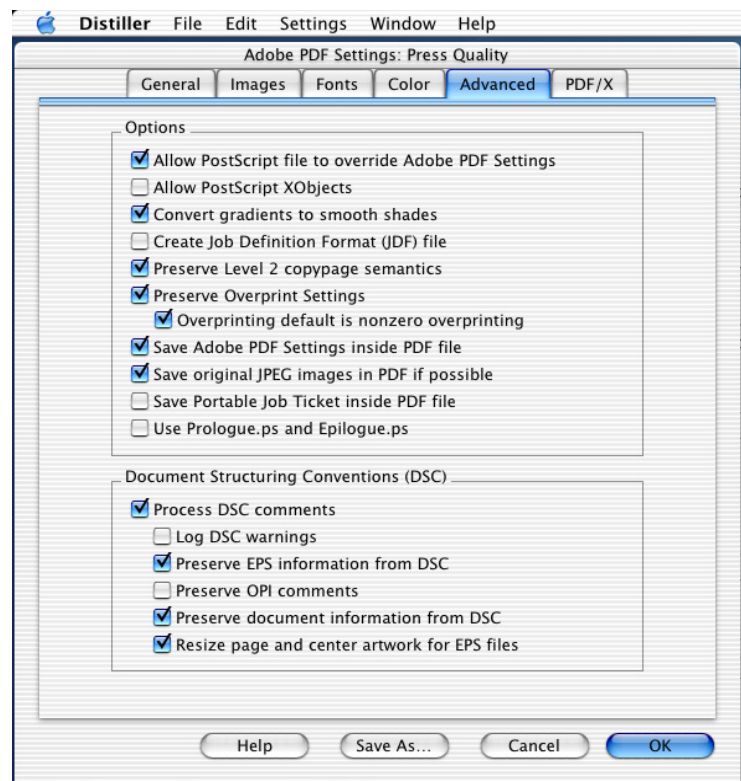
Now click on the Color tab.

- 5) "Settings File:" should be set to **None**. Under the "Color Management Policies", select **Leave Color Unchanged**. "Intent" should be set to **Default**. Under "Device-Dependent Data", Preserve Under Color Removal and Black Generation... should be **checked**. "Where transfer functions are found" should be set to **Apply**. "Preserve Halftone Information" is **Unchecked**

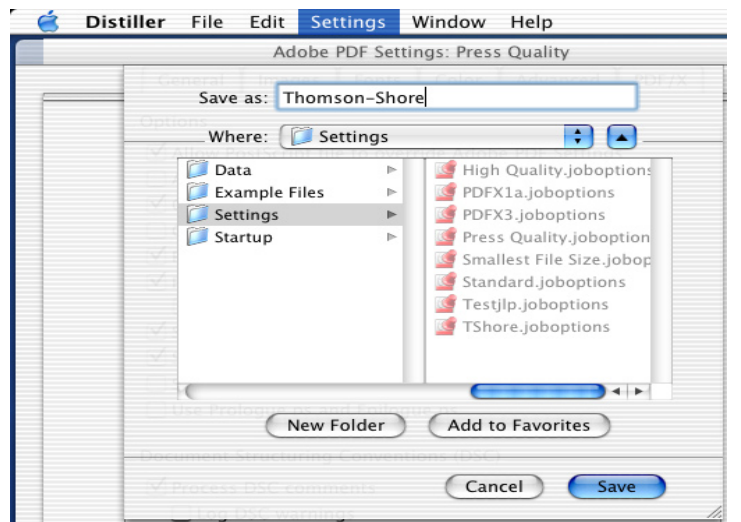


Now click on the Advanced tab.

- 6) Make the selections as shown in the figure on the right. Were not currently doing anything with the PDF/X Tab so nothing should be checked under that tab. Your almost done configuring Distiller 6.



- 7) Click "Save As" at the bottom of the dialog box. Type a name that will help you recognize who the configuration belongs to. (see picture at bottom right) For our example we are using **Thomson-Shore**. Now click on Save. The configuration is done and you can now distill your PostScript files. For automated batch processing you can set up a "Watched" folder on your desktop. Refer to the Distiller manual for setting up Watched folders.



- 8) Once your files are in PDF format, you need to view them either on screen or printed. After you have looked over your PDF document you can easily verify if fonts are embedded subsets by going to the File menu/Document Properties/Fonts. This dialog box provides information about the fonts. What you do not want to see here is Adobe Serif MM or Adobe Sans MM. If you do see these then your fonts were not available to distiller, it is using these Multiple Master fonts to simulate the missing font. What you should see is that your fonts are "Embedded Subset". If you have any doubts, please send us a test file.